

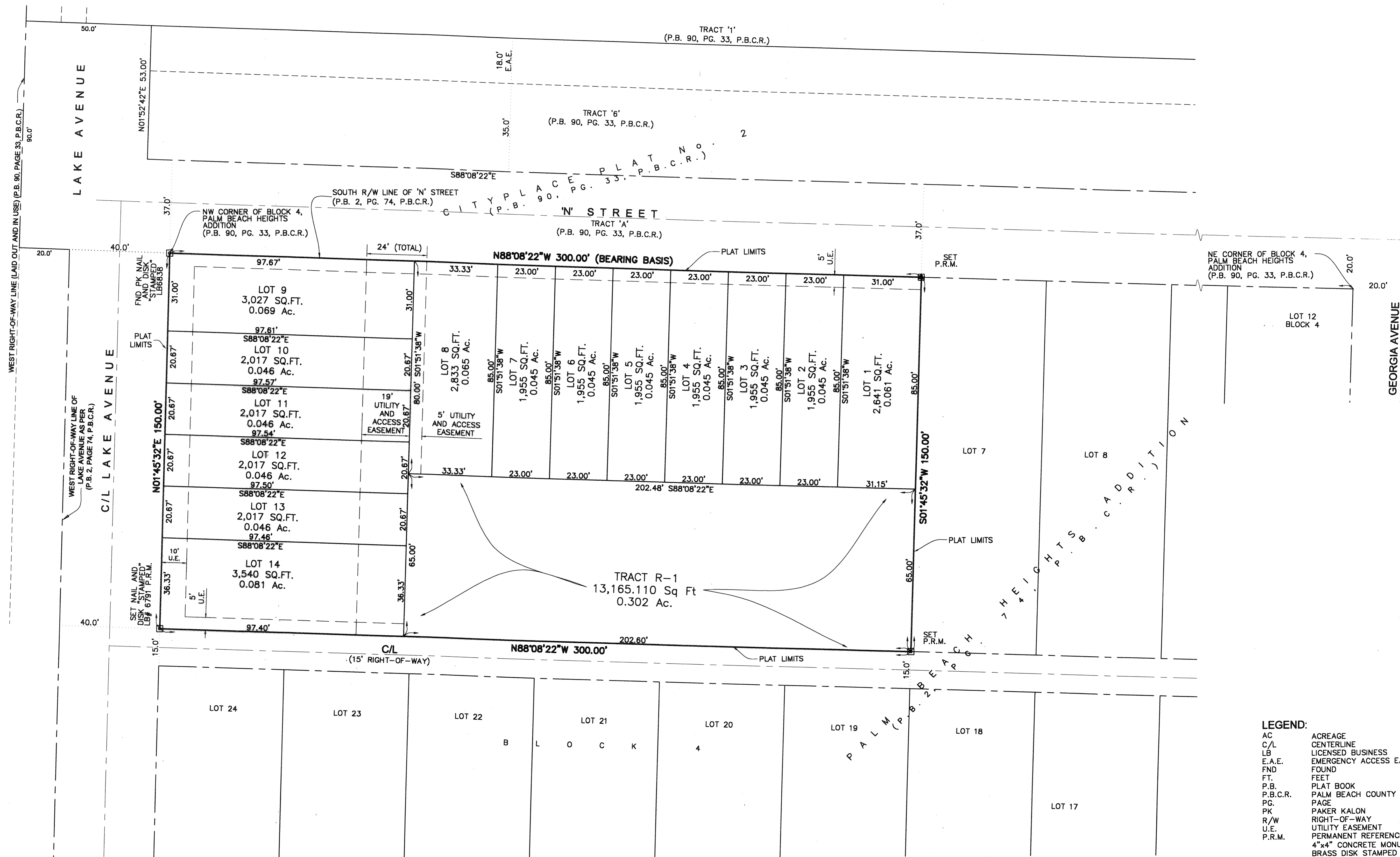
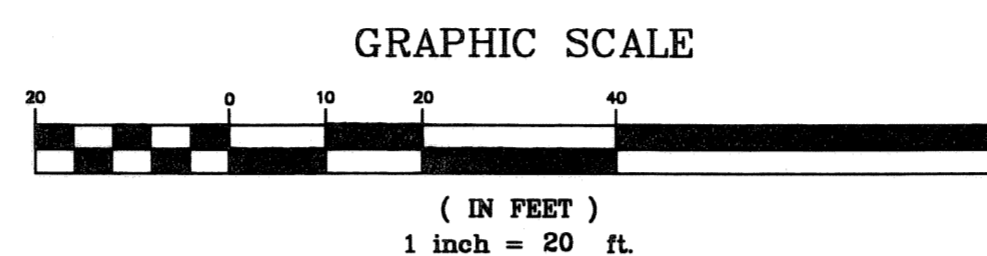
GRANDVIEW HEIGHTS VILLAS

A REPLAT OF LOTS 1 THROUGH 6, BLOCK 4, "PALM BEACH HEIGHTS ADDITION"
 RECORDED IN PLAT BOOK 2, PAGE 74, PALM BEACH COUNTY RECORDS, FLORIDA
 IN SECTION 28, TOWNSHIP 43 SOUTH, RANGE 43 EAST,
 CITY OF WEST PALM BEACH, PALM BEACH COUNTY, FLORIDA
 AUGUST 2005 SHEET 2 OF 2

200

This Instrument Prepared By:
 RONNIE L. FURNISS, P.S.M.
 Certificate of Authorization No. LB 6791
 JULY 2005

Calvin, Giordano & Associates, Inc.
 Engineers Surveyors Planners
 580 Village Boulevard, Suite 340
 West Palm Beach, Florida 33409
 Phone: 561.684.6161 Fax 561.684.6380



- LEGEND:**
- AC ACREAGE
 - C/L CENTERLINE
 - LB LICENSED BUSINESS
 - E.A.E. EMERGENCY ACCESS EASEMENT
 - FND FOUND
 - FT. FEET
 - P.B. PLAT BOOK
 - P.B.C.R. PALM BEACH COUNTY RECORDS
 - PG. PAGE
 - PK PAKER KALON
 - R/W RIGHT-OF-WAY
 - U.E. UTILITY EASEMENT
 - P.R.M. PERMANENT REFERENCE MONUMENT
 - 4"x4" CONCRETE MONUMENT WITH BRASS DISK STAMPED LB6791
 - SQ.FT. SQUARE FEET